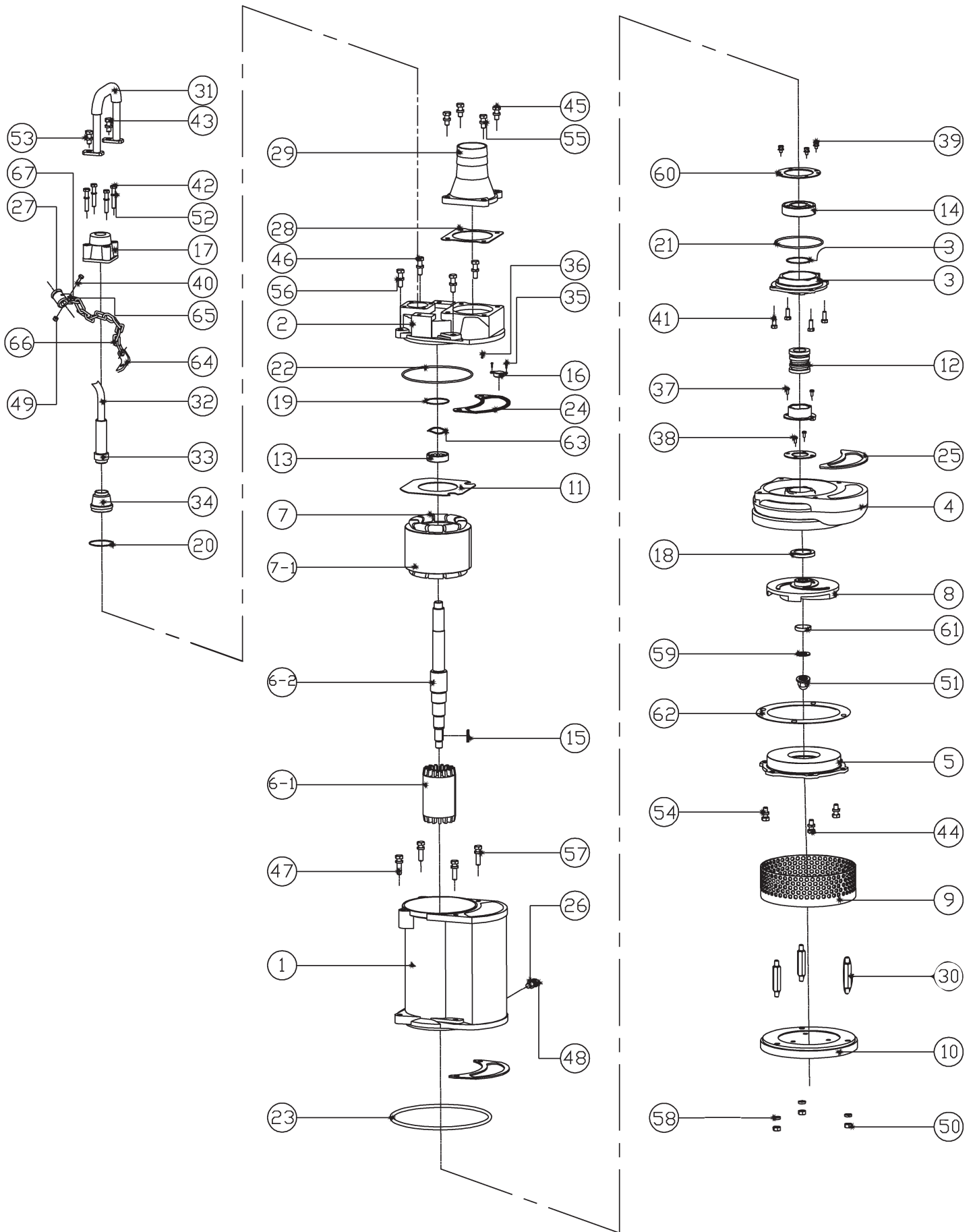


KT337 & ABOVE - SPARE PARTS & ACCESSORIES



KT337 & ABOVE - SPARE PARTS & ACCESSORIES

#	PRONTO CODE	DESCRIPTION	MATERIAL & SPECS
1		Motor housing	HT-250
2		Motor cover	HT200
3		Bearing seat	HT200
4		Pump casing	HT250
5		Pump casing chassis	QT450-10 inlet Φ 79
6		Shaft	SUS420 Φ 27* Φ 79.5*100T*360L
6-1		Rotor	Φ 27* Φ 79.5*100T, slope 1.5, two-column 10mm, with blade
6-2		Axle	SUS420360L
7		Coil(415V/50HZ)	Φ 160* Φ 79.5*100T
7-1		Stator	Φ 160* Φ 79.5*100T*24 grooves
7-2		Copper wire	Polyesterimide Enameled copper wire H0.8
7-3		Copper wire	Polyesterimide Enameled copper wire H0.85
7-4		Outlet line	2 squaredrubber wire, black*220mm*12*12 half peeling
8	810766	Impeller(50HZ)	chrome steel Φ 166*12T*4 blades
8-1		Impeller(50HZ/heat treatment)	chrome steel Φ 166*12T*4 blades
8-2		Impeller(50HZ/keyway 5mm)	chrome steel Φ 166*12T*4 blades
8-3		Impeller(50HZ/machining)	chrome steel Φ 166*12T*4 blades
8-4		Impeller(50HZ/blank)	chrome steel Φ 166*4 blades
9	810770	Strainer	SUS304 Φ 230*75.5
10		Strainer plate	HT200 Φ 222*24.5T
11		Wiring board	Bakelite Φ 160*1.5mm
11-1		Bakelite plate	Bakelite 1.5*1M*1.2M
12	810774	Mechanical seal	CA/CE+SIC/SICT322ED 25AI/30AA
13	810776	Upper bearing	6304ZZ (Iron cover)
14	810780	Lower bearing	6307ZZ (Iron Cover)
15		Double round key	SUS3045*5*25
16		Thermo switch	KA-313 GBXL103 (8A/120°C)
17		Wire fixing buckle	HT200 Φ 27*70*70
18		Wiring head	HT200 Φ 53* Φ 28*46L
19		Oil seal	NBR Φ 58* Φ 40*8t/TC(SS Spring)
20		O-ring (upper bearing, wire head)	NBR Φ 49.7*3.5T
21		O-ring (bearing cover)	NBR Φ 110*3.5T
22		O-ring (motor cover)	NBR Φ 158.35*3.53T
23		O-ring (motor housing)	NBR Φ 163*3.5T
24		Packing(test-water hole)	NBR Φ 8* Φ 13.5*3t
25	810783	Motor cover gasket	NBR, 60 degree, black 179*105R*2.7T
26		Impeller gasket	NBR, 60 degree, black 187*105R*3T
27		Seal gasket(oil seal for motor housing)	PTFE Φ 19* Φ 12*2T
28		Packing(wire protector)	NBR, 60 degree, black Φ 30* Φ 15*38L
29	810787	Hose connection gasket	NBR, 60 degree, black Φ 120* Φ 96*4T
30	810790	Hose connection	HT2003" (Hose connection)
31		Double end pillars (strainer plate)	SUS304 Hex Machine screw M10*105
32	810793	Handle	Q235A+Rubber coating
33		Wire	H07RNF*2.5*4C*30M
34	810796	Wire head(Φ 12.5)	NBR, 60 degree, black Φ 34* Φ 12.5*106t

KT337 & ABOVE - SPARE PARTS & ACCESSORIES

#	PRONTO CODE	DESCRIPTION	MATERIAL & SPECS
35		Screw (Thermo switch)	SUS304oval head screw M4*12
		Screw (ground wire)	SUS304
36		Screw (mechanical seal)	SUS304oval head screw M5*8
37		Screw (mechanical seal)	SUS304 Round Head Screw M5*10
38		Screw (bearing gasket)	SUS304 Hexagon Machinery Thread Screw M6*12
39		Screw (wire fixing buckle)	SUS304 Hexagon Machinery Thread Screw M6*16
40		Screw (test-water hole)	SUS304 Hexagon socket head screw M8*10
41		Screw (bearing seat)	SUS304Hexagon Machinery Thread Screw M8*20
42		Screw (wire fixing buckle)	SUS304 Hex Machine screw M8*50
43		Screw (handle)	SUS304 Hex Machine screw M10*25
		Screw (pump casing plate)	SUS304
		Screw (hose connection)	SUS304
44		Screw (motor cover)	SUS304 Hex Machine screw M10*35
45		Screw (motor housing)	SUS304 Hex Machine screw M10*40
46		Screw (motor housing oil hole)	SUS304 Hex Machine screw M12*20
47		Nut (wire fixing buckle)	SUS304M6
48		Nut (strainer plate)	SUS304M10
49		Nut (impeller)	SUS304 HEX CAP NUTS M16
50		Washer (wire fixing buckle)	SUS304Spring Washer M8
51		Washer (handle)	SUS304Spring Washer M10
		Washer (pump casing)	SUS304
		Washer (hose connection)	SUS304
		Washer (motor cover)	SUS304
		Washer (motor housing)	SUS304
		Washer (strainer plate)	SUS304
52		Washer (impeller)	SUS304 Sring Washer M16
53		Bearing gasket (lower)	A3 Φ 105*Φ 70*2T
54		Impeller bush	SUS304 Φ 38*Φ 17*8t
55		water barrier gasket	PET Φ 222*Φ 180*0. 6T
56		Wave spring	65Mn/ Φ 51*Φ 41*0. 3
57		Mechanical seal clamp	A3 Φ 90*Φ 45. 5
58	810799	Bearing	PP+30%GF Φ 90
59		tribrach	A3 L type
60		Ductclamp	SUS304
61		Chain	SUS304 Φ 3. 7 * length37mm * width14mm
62		Shackle	SUS304YS360-5mm D type shackle
63		Buckle (lower bearing)	black iron STW-35
64		Ending Terminal	NYLON66TM-3
65		0	
66		0	40*60mm Matte Silver Polyester
67		QC label	Black characters on orange background
68		Wire label	English/Red
69		Direction Sticker	ROTATION(arrow/Red background white characters)
70		0	165*349 Taiwan minimeter (500mm*1050mm)
71		0	31*69*32cm内+HT
72		Oil for bearing	HD-20